

SECTION II.

TM 9-2320-272-24P-2

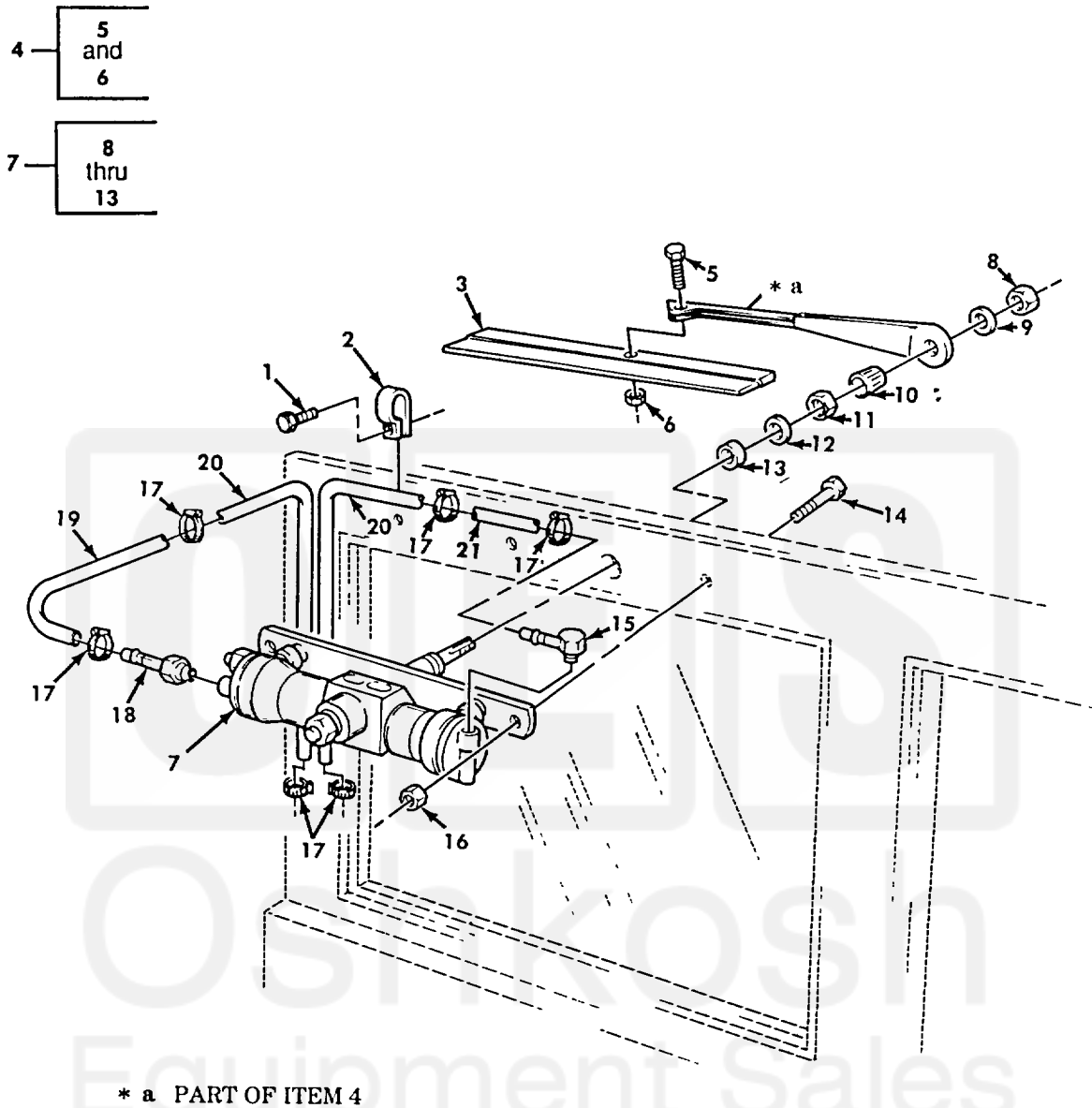


Figure 539. Windshield Wiper Arm, Blade, and Motor Assembly (Old Style).

SECTION II						
(1)	(2)	(3)	(4)	(5)	(6)	(7)
ITEM NO	SMR CODE	NSN	CAGEC	PART NUMBER	DESCRIPTION AND USABLE ON CODES (UOC)	QTY
GROUP 2202 ACCESSORY ITEMS						
FIG. 539 WINDSHIELD WIPER ARM, BLADE, AND MOTOR ASSEMBLY(OLD STYLE)						
1	PAOZZ	5305008550957	96906	MS24629-46	SCREW, TAPPING	6
2	PAOZZ	5340004942234	96906	MS21334-3	CLAMP, LOOP	6
3	PAOZZ	2540004813637	60703	M874-44EC	BLADE, WINDSHIELD WI	2
4	PAOZZ	2540011236823	19207	11669624	ARM, WINDSHIELD WIPE	2
5	PAOZZ	5305011642310	60703	1951-7-BD	.SCREW, MACHINE	2
6	PAOZZ	5310011632472	82484	82845-JD	.NUT, SELF-LOCKING, HE	2
7	XBOZZ		19207	11669618-1	MOTOR, WINDSHIELD WI FOR MOTOR	2
					REPLACEMENT ORDER KIT P/N 5705690	
8	PAOZZ	5310012042002	82484	91522-J	.NUT, PLAIN, HEXAGON	2
9	PAOZZ	5310001670721	96906	MS35333-41	.WASHER, LOCK	2
10	PAOZZ	5365009462231	60703	86324-1J	.BUSHING, TAPERED	2
11	PAOZZ	5310008041209	60703	76115J	.NUT, PLAIN, HEXAGON	2
12	PAOZZ	5310010284848	60703	77121-3JD	.WASHER, FLAT	2
13	PAOZZ	5310007607493	82484	77121-1	.WASHER, FLAT	2
14	PAOZZ	5305009953442	96906	MS35207-268	SCREW, MACHINE	4
15	PAOZZ	4730011916433	96906	MS24519-2	ELBOW, PIPE TO HOSE	2
16	PAOZZ	5310002632862	96906	MS21045-C3	NUT, SELF-LOCKING, HE	4
17	PAOZZ	4730011098001	19207	11662913	CLAMP, HOSE	12
18	PAOZZ	4730007827102	96906	MS24522-2	ADAPTER, STRAIGHT, PI	2
19	MOOZZ		19207	12277085-2	HOSE, NONMETALLIC MAKE FROM HOSE, P/N	2
					A12876	
20	MOOZZ		19207	8689206-26	TUBE, METALLIC MAKE FROM TUBING, P/N	4
					8689206, 26 INCHES LONG	
21	MOOZZ		19207	12277085-1 XX	HOSE, NONMETALLIC MAKE FROM HOSE, P/N	2
					A12876	

END OF FIGURE

